

## Powered Mixers

# EUROPOWER PMP980S/PMP960M



### EUROPOWER PMP960M — 900-Watt 6-Channel Powered Mixer with Multi-FX Processor and FBQ Feedback Detection System

- Ultra-compact 450-Watt dual mono powered mixer
- Mixer section features 6 mono channels plus separate tape returns
- Studio-grade 24-bit stereo FX processor with 100 awesome presets including reverb, chorus, flanger, delay, pitch shifter and various multi-effects
- 6 high-quality mic preamps with switchable +48 V phantom power for condenser microphones
- Effective, extremely musical 3-band EQ, switchable Pad and Clip LEDs on all channels
- Selectable double mono (main/main, main/monitor) or bridged mono amplifier operation mode
- Adjustable Aux input for connecting external signal sources

### EUROPOWER PMP980S —900-Watt 10-Channel Powered Mixer with Dual Multi-FX Processor and FBQ Feedback Detection System

- Ultra-compact 2 x 450-Watt stereo powered mixer
- 10-channel mixer section features 6 mono and 2 stereo channels plus separate tape returns
- 2 studio-grade 24-bit stereo FX processors with 100 awesome presets including reverb, chorus, flanger, delay, pitch shifter and various multi-effects

If you need superior sound quality for small club gigs, churches or speeches, but have to keep the outboard gear to a minimum, get ready to love the PMP980S and PMP960M. The 900-Watt, 10-channel/6-channel mixers give you everything you need in one efficient, highly portable little package.

#### Massive mono or stunning stereo

There are several features that distinguish these mixers from one another. The PMP960M is a mono dual-powered mixer with six (6) mono mic/line inputs, while the PMP980S is designed to operate in stereo and provides eight (8) mono mic/line inputs plus two stereo channels.

Another significant difference is in their effects processing power. The PMP960M has a single studio-grade 24-bit FX processor with 100 presets that include reverb, chorus, flanger, delay, pitch shifter and various multi-effects to make you sound good. The PMP980S ups the ante with two (2) of these awesome processors operating in glorious true-stereo mode.

#### Classic control, state-of-the-art sound

Each of the mic inputs on the PMP980S and PMP960M contains our high-quality IMP (Invisible Mic Preamp) mic preamps with switchable +48 V phantom power for condenser mics. Now you can leave your high-end mic preamps at home, and the kind of sound quality that was once only available in the studio is ready to go wherever you do.

*Continued on next page*



# EUROPOWER PMP980S PMP960M

- 8 high-quality mic preamps with switchable +48 V phantom power for condenser microphones
- Effective, extremely musical 3-band EQ, switchable Pad and Clip LEDs on all mono channels
- Selectable stereo (main L/R), double mono (main/monitor) or bridged mono amplifier operation mode
- Adjustable stereo Aux input for connecting external signal sources

## Common Features

- Ultra-compact design at nearly half the depth and weight of conventional powered mixers means no more lugging around dead weight
- Revolutionary amplifier technology: enormous power, incredible sonic performance and super-light weight
- FBQ Feedback Detection system instantly reveals critical frequencies for easy feedback removal
- Standby switch mutes all input channels during breaks while background music is provided via tape inputs
- Dual 7-band graphic EQ allows precise frequency correction of monitor and main outputs
- Voice Canceller function removes singer's voice from recordings for Karaoke applications
- Speaker Processing function adjusts frequency response to match professional speaker systems like BEHRINGER EUROLIVE series, etc.

Plus with the built-in 24-bit FX processor, you get 100 mind-blowing digital effect presets such as delay, chorus and reverb you can apply to any channel, as well as to the monitors and main output. No outboard gear needed — and the PMP980S comes with dual FX processors for double the effects!

Both of these mixers come equipped with our amazing FBQ Feedback Detection System, which automatically pinpoints trouble frequencies so you can snuff them out before you—or the audience—go deaf. Just touch a button and watch as trouble frequencies are indicated by red LEDs on the 7-band graphic EQ—one for the Mains, one for the Monitors.

## The Ins and Outs

The PMP980S and PMP960M give you loads of flexibility in accommodating whatever the center of attention happens to be. Channels 1-6 of both mixers are for mics, bass guitars or other mono instruments. The PMP980S features stereo channels 7-8 and 9-10, complete with IMP mic preamps, so you can use them for mono/stereo instruments, or for up to 8 mics. Now that's flexibility!

In the bottom right corner of the mixer, you'll find the FX, INPUT TO MAIN and OUTPUT sections. The FX section features a FOOTSW(itch) input. This lets you connect a dual footswitch like the AB200 so you can remotely engage/bypass the internal FX processors. FX OUT 1 & 2 can be used to connect up to two outboard effects processors.

The AUX IN ¼" inputs in the INPUT TO MAIN section allow you to route an external stereo signal (such as a drum machine), to the main mix on

the PMP980S—the AUX input on the PMP960M provides the same functionality, except with a mono signal. The AUX IN control adjusts the volume of the external signal in the main mix. Use the 2TR IN RCA inputs to feed in external stereo signals from CD players or tape decks. The VOICE CANCELLER switch allows you to eliminate the vocals from pre-recorded music for karaoke applications.

In the OUTPUT section, the REC OUT RCA outputs send line-level signals from the mixer to a recording device, so you can finally get to work on that triple-live album you've always dreamed of. The MAIN ¼" connectors are provided for situations where you might want to connect to an external power amp, or if you need to feed the main output signal to active loudspeakers, say in a church cry room or to your business' lobby. Connect your monitor power amps or active monitor speakers to the MONITOR output.

## Channel your inner sound guru

You'll be operating this mixer like it's second nature thanks to its simple, intuitive layout. Each channel has a three-band EQ (HIGH, MID, LOW) blue; MON(itor) level in bright blue; FX1 in red; FX2 in orange (PMP980S only); PAN in black (only PMP980S); LEVEL in white. There's also a switchable PAD and CLIP LED per channel.

Once you've set the levels on individual channels, it's easy to create your MAIN and MONITOR mixes. Both the MAIN and MONITOR sections feature 7-band graphic EQs, with our proprietary FBQ Feedback Detection System to help you adjust the sound to your room's acoustics.

*Continued on next page*



# EUROPOWER PMP980S PMP960M

- Internal switch-mode power supply, noise-free audio, superior transient response and very low power consumption
- Rack mount brackets included
- High-quality components and exceptionally rugged construction ensure long life
- Conceived and designed by BEHRINGER Germany

This is where the FBQ feature comes in particularly handy. Press the FBQ IN switch to activate the Feedback Detection System. Trouble frequencies are indicated by brightly lit fader LEDs. Just lower the level of the respective frequency range until feedback disappears and the LED goes out.

The FX RET controls add the selected effect signal to the main or monitor mix. When both are completely counterclockwise, no effect is applied. The 2TR IN control adjusts the volume of the 2 Track signal, if you have connected one.

Use the MAIN MASTER/MONITOR MASTER controls to adjust the main and monitor output signals, respectively. The 5-digit LED meters give you a visual representation of these volumes. The upper LIM LED illuminates when output levels are too high, activating the internal amp protection circuit.

PMP980S' POWER AMP switch toggles between three operating modes: STEREO (main left and right outputs), MON/MONO (Output A can be used to power Monitors and Output B to power Mains in mono) and BRIDGE (the power outputs of A and B on the back panel are added and provided at OUTPUT B). The PMP960M provides similar options: MAIN/MAIN Bridge (outputs of A and

B are added and provided at OUTPUT B), MAIN/MAIN non-Bridge (dual mono amps), and MAIN/MON mono (Output A can be used to power Mains and Output B to power Monitors). This clever functionality enables you to power both your mains and monitors without the need for an additional power amp just for your monitors.

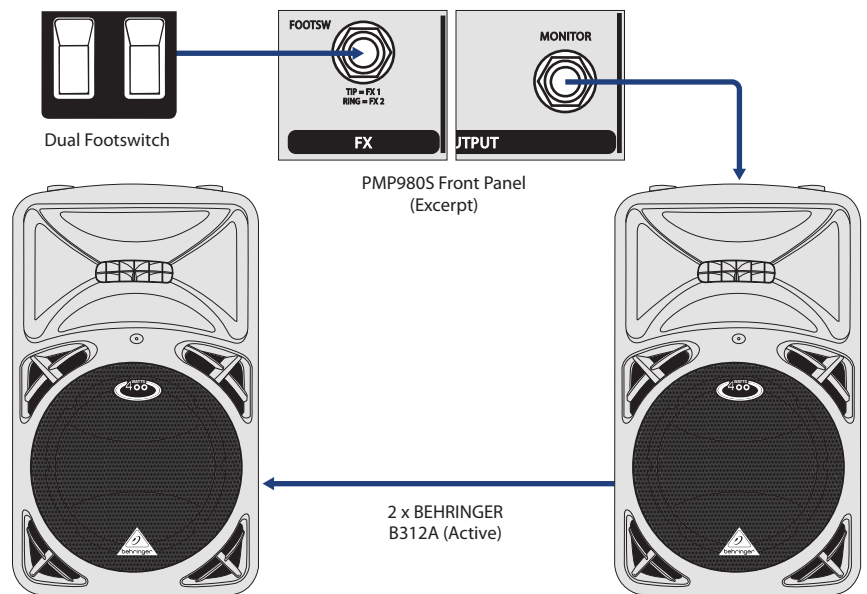
Directly below, you'll find the SPEAKER PROCESSING switch that activates a filter in both models, adapting the mixer to the frequency response of your loudspeakers.

Finally, the STANDBY switch lets you mute all input channels during breaks, preventing the microphones from picking up noise or interference. You can leave all faders untouched while you play a CD via the CD/TAPE inputs.

### Small, simple, superb

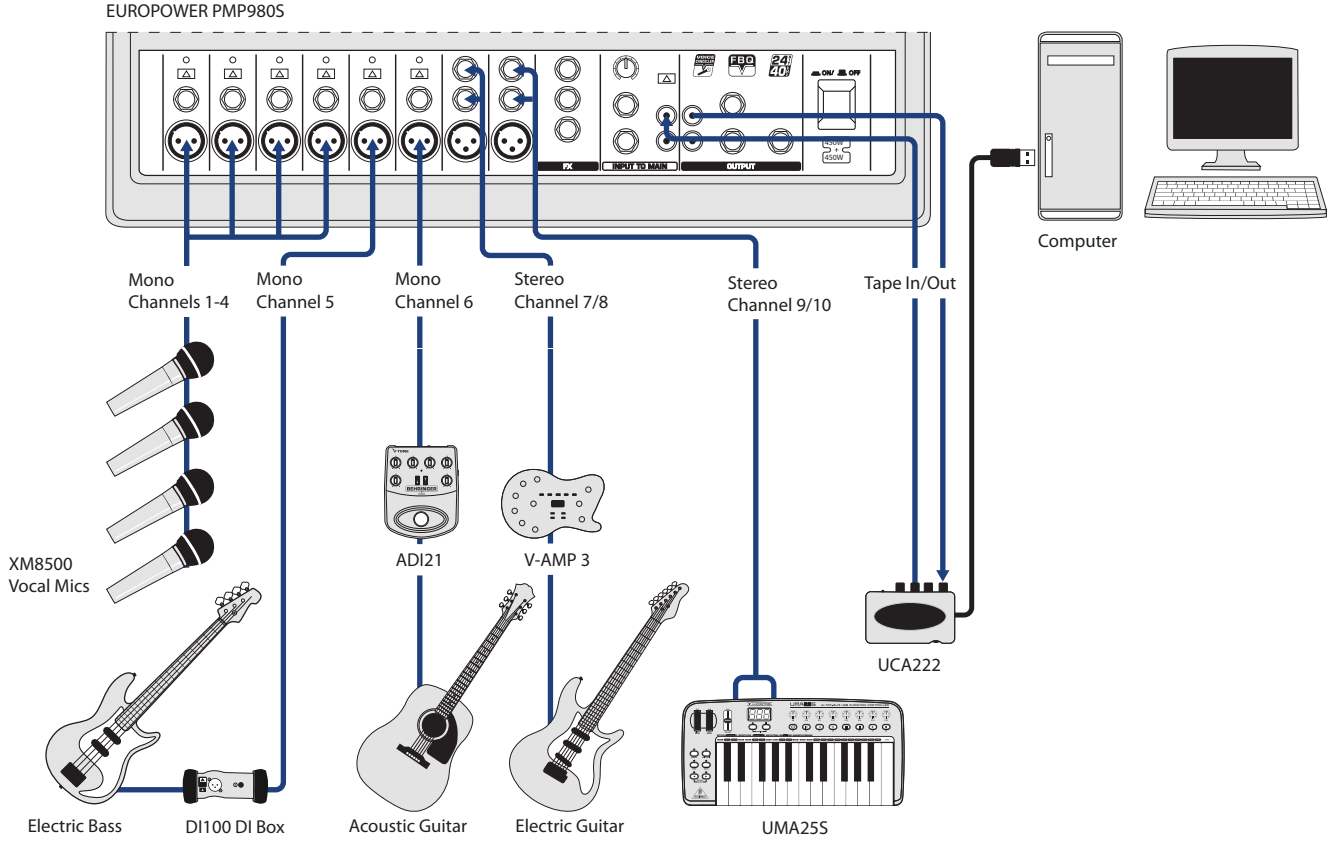
At just 20.75 lbs / 9.4 kg and 18.75 lbs / 8.5 kg respectively, the PMP980S and PMP960M were designed specifically for gigs that don't call for a massive PA system. Small, simple events call for a lightweight, simple powered mixer, and these are the most efficient, affordable mixers for the job. They are easy to learn, easy to operate, and with so many incredible built-in features, they make it easy to put on a show in an instant.

## Loudspeaker (monitor mix)

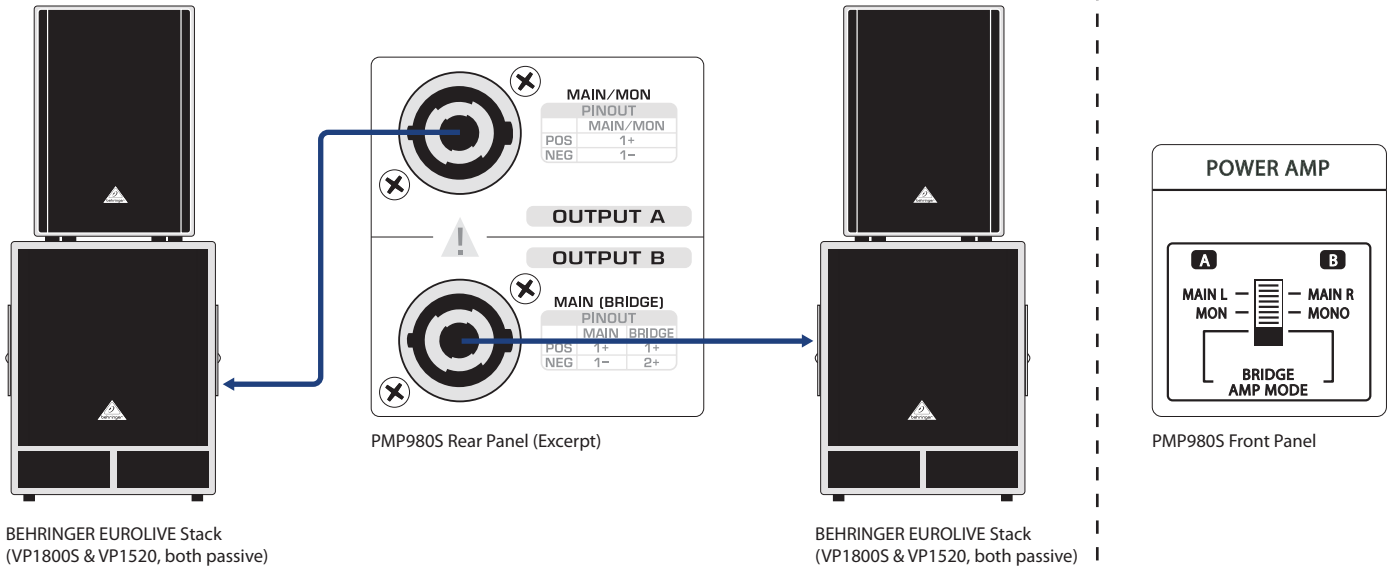


# EUROPOWER PMP980S PMP960M

## Front Panel

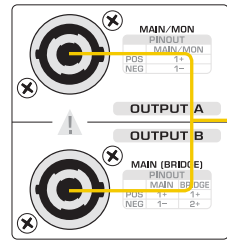


## Loudspeaker (F.O.H. mix)



# EUROPOWER PMP980S PMP960M

OUTPUT A & B connect to passive PA speakers



PROGRAM dial selects FX presets  
FX adjust effects return level in main signal  
FX adjusts effects return level in monitor  
7-band graphic EQ  
FBQ switch  
CD/TAPE IN adjusts CD/TAPE signal in monitor/main  
4-segment MONITOR LEVEL meter

PHANTOM POWER switch for using condenser mics

MONITOR MASTER dial controls monitor signal volume

POWER AMP switch toggles between STEREO, MONO and BRIDGED mode

4-segment MAIN LEVEL meter

SPEAKER PROCESSING switch activates filter, adapting mixer to loudspeakers

MAIN MASTER dial control main signal volume

STANDBY switch mutes all input channels, except CD/TAPE IN

VOICE CANCELER switch eliminates vocals from CD/TAPE IN signal

MAIN 1/4" jacks send signal to external amplifiers, active loudspeakers, etc.

FX IN switch activates FX processor

HIGH EQ

MID EQ

LOW EQ

MON adjusts signal level to monitors

FX 1 controls level of signal to FX 1

FX 2 controls level of signal to FX 2 (PMP980S only)

PAN adjusts channel signal in stereo image (PMP980S only)

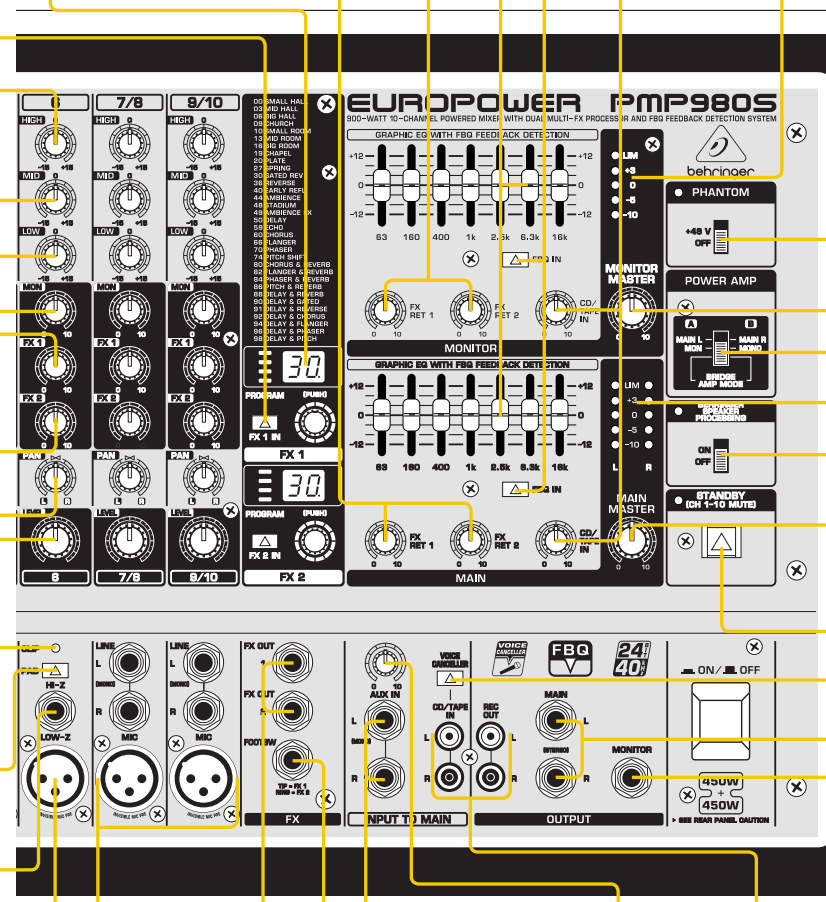
Channel signal LEVEL control

CLIP LED

PAD switch reduces input sensitivity by 20 dB

1/4" bal/unbal input

8/6 MONO channels, bal XLR IN



Left and right bal/unbal line level 1/4" TRS inputs for stereo channels (PMP980S only)

FX OUT 1&2 1/4" jacks connect to outboard equipment (PMP960M has a single FX OUT)

FOOTSW(itch) input

AUX IN 1/4" inputs route external stereo signal to main mix (PMP960M has only one AUX IN)

AUX IN dial adjusts external signal level in main mix

RCA CD/TAPE IN and REC OUT jacks

1/4" MONITOR output connects to power amplifiers, active monitor speakers, IEM systems, etc.

# EUROPOWER PMP980S PMP960M

## PMP980S

### MICROPHONE INPUTS

Type	XLR, electronically balanced input circuit
Mic E.I.N. (20 Hz - 20 kHz)	–
@ 0 Ohm source resistance	–112 dB / 114 dB A-weighted
@ 50 Ohm source resistance	–112 dB / 114 dB A-weighted
@ 150 Ohm source resistance	–112 dB / 114 dB A-weighted
Frequency response	< 10 Hz - 200 kHz (–1 dB) < 10 Hz - > 200 kHz (–3 dB)
Gain	+12 dBu @ +10 dB gain
Max. input level	+12 dBu @ +10 dB gain
Impedance	approx. 2.2 kΩ balanced / 1.1 kΩ unbalanced
Signal-to-noise ratio	110 dB / 114 dB A-weighted (0 dBu In @ +10 dB gain)
Noise (THD + N)	0.001% / 0.0007% A-weighted

### MONO LINE INPUTS

Type	¼" TS connectors, balanced
Impedance	approx. 20 kΩ, balanced
Max. input level	+21 dBu

### STEREO LINE INPUTS

Type	¼" TRS connectors, unbalanced
Impedance	approx. 100 kΩ, unbalanced
Max. input level	+21 dBu

### EQUALIZER

Low	80 Hz / ±15 dB
Mid	2.5 kHz / ±15 dB
High	12 kHz / ±15 dB

### 2 TRACK INPUT

Type	RCA
Impedance	approx. 10 kΩ

### PREAMP OUTPUTS

#### MAIN

Type	¼" TS connectors, unbalanced
Impedance	approx. 150 Ω, unbalanced
Max. output level	+21 dBu

#### MONITOR

Type	¼" TS connectors, unbalanced
Impedance	approx. 150 Ω, unbalanced
Max. output level	+21 dBu

### STEREO OUTPUTS

Type	¼" TRS connectors, unbalanced
Impedance	approx. 150 Ω, unbalanced
Max. input level	+21 dBu
Type	RCA
Impedance	approx. 1 kΩ
Max. input level	+21 dBu

## MAIN MIX SYSTEM DATA

### Noise:

MAIN MIX @ –∞	–102 dB / –106 dB A-weighted
Channel fader –∞	–102 dB / –106 dB A-weighted
MAIN MIX @ 0 dB	–88 dB / –91 dB A-weighted
Channel fader –∞	–88 dB / –91 dB A-weighted
MAIN MIX @ 0 dB	–84 dB / –86 dB A-weighted
Channel fader @ 0 dB	–84 dB / –86 dB A-weighted

### LOUDSPEAKER OUTPUTS

Type	Professional speaker connector
<b>Load impedance:</b>	
MAIN L/R	4 - 8 Ohm
MONITOR/MAIN MONO	4 - 8 Ohm
MAIN MONO/MAIN MONO	4 - 8 Ohm
BRIDGE	8 - 16 Ohm

### DSP

Converter	24-bit Delta-Sigma, 64/128-times oversampling
Dynamics D/A	90 dB
Sampling rate	40 kHz
Delay Time	max. 5 secs
Signal run time (Line In > Line Out)	approx. 1.5 ms

### DISPLAY

Type	2 x 2-digit, 7-segment LED
------	----------------------------

### OUTPUT POWER

#### RMS @ 1% THD, both channels driven:

8 Ohm per channel	160 W
4 Ohm per channel	300 W

#### RMS @ 1% THD, bridged mode:

8 Ohm	600 W
-------	-------

#### Peak Power, both channels driven:

8 Ohm per channel	260 W
4 Ohm per channel	450 W

#### Peak Power, bridged mode:

8 Ohm	900 W
-------	-------

### POWER SUPPLY

Power Consumption	max. 1000 W
Fuse 100 - 120 V~, 50/60 Hz	T 10 A H 250 V
Fuse 220 - 240 V~, 50/60 Hz	T 6.3 A H 250 V
Mains connector	IEC standard receptacle

### DIMENSIONS/WEIGHT

Dimensions (H x W x D)	12.4 x 18.1 x 8.7" 315 x 460 x 220 mm
Weight	20.75 lbs / 9.4 kg

## PMP960M

### MICROPHONE INPUTS

Type	XLR, electronically balanced input circuit
Mic E.I.N. (20 Hz - 20 kHz)	–
@ 0 Ohm source resistance	–112 dB / 114 dB A-weighted
@ 50 Ohm source resistance	–112 dB / 114 dB A-weighted
@ 150 Ohm source resistance	–112 dB / 114 dB A-weighted
Frequency response	< 10 Hz - 200 kHz (–1 dB) < 10 Hz - > 200 kHz (–3 dB)
Gain	+12 dBu @ +10 dB gain
Max. input level	+12 dBu @ +10 dB gain
Impedance	approx. 2.2 kΩ balanced / 1.1 kΩ unbalanced
Signal-to-noise ratio	110 dB / 114 dB A-weighted (0 dBu In @ +10 dB gain)
Noise (THD + N)	0.001% / 0.0007% A-weighted

### MONO LINE INPUTS

Type	¼" TS connectors, balanced
Impedance	approx. 20 kΩ, balanced
Max. input level	+21 dBu

### STEREO LINE INPUTS

Type	–
Impedance	–
Max. input level	–

### EQUALIZER

Low	80 Hz / ±15 dB
Mid	2.5 kHz / ±15 dB
High	12 kHz / ±15 dB

### 2 TRACK INPUT

Type	RCA
Impedance	approx. 10 kΩ

### PREAMP OUTPUTS

#### MAIN

Type	¼" TS connectors, unbalanced
Impedance	approx. 150 Ω, unbalanced
Max. output level	+21 dBu

#### MONITOR

Type	¼" TS connectors, unbalanced
Impedance	approx. 150 Ω, unbalanced
Max. output level	+21 dBu

### STEREO OUTPUTS

Type	–
Impedance	–
Max. input level	–
Type	RCA, mono output
Impedance	approx. 1 kΩ
Max. input level	+21 dBu

# EUROPOWER PMP980S PMP960M

## MAIN MIX SYSTEM DATA

Noise:	
MAIN MIX @ -∞	-102 dB / -106 dB A-weighted
Channel fader -∞	-102 dB / -106 dB A-weighted
MAIN MIX @ 0 dB	-88 dB / -91 dB A-weighted
Channel fader -∞	-88 dB / -91 dB A-weighted
MAIN MIX @ 0 dB	-84 dB / -86 dB A-weighted
Channel fader @ 0 dB	-84 dB / -86 dB A-weighted

## LOUDSPEAKER OUTPUTS

Type	Professional speaker connector
------	--------------------------------

## Load impedance:

MAIN L/R	-
MONITOR/MAIN MONO	4 - 8 Ohm
MAIN MONO/MAIN MONO	4 - 8 Ohm
BRIDGE	8 - 16 Ohm

## DSP

Converter	24-bit Delta-Sigma, 64/128-times oversampling
Dynamics D/A	90 dB
Sampling rate	40 kHz
Delay Time	max. 5 secs
Signal run time (Line In > Line Out)	approx. 1.5 ms

## DISPLAY

Type	2-digit, 7-segment LED
------	------------------------

## OUTPUT POWER

### RMS @ 1% THD, both channels driven:

8 Ohm per channel	160 W
4 Ohm per channel	300 W

### RMS @ 1% THD, bridged mode:

8 Ohm	600 W
-------	-------

### Peak Power, both channels driven:

8 Ohm per channel	260 W
4 Ohm per channel	450 W

### Peak Power, bridged mode:

8 Ohm	900 W
-------	-------

## POWER SUPPLY

Power Consumption	max. 1000 W
Fuse	100 - 120 V~, 50/60 Hz T 10 A H 250 V
Fuse	220 - 240 V~, 50/60 Hz T 6.3 H 250 V
Mains connector	IEC standard receptacle

## DIMENSIONS/WEIGHT

Dimensions (H x W x D)	12.4 x 18.1 x 8.7" 315 x 460 x 220 mm
Weight	18.75 lbs / 8.5 kg

Please note these specifications are preliminary and conceptual in nature, and as such are subject to change as product development progresses. This information is supplied for market research purposes only and is not to be made public in any manner. This document is solely the property of The MUSIC Group, or one of its subsidiaries, and must be surrendered upon request of the owner.

For service, support or more information contact the BEHRINGER location nearest you:

**Europe** Tel.: +49 2154 9206 4149  
Fax: +49 2154 9206 4199

**USA/Canada** Tel.: +1 425 672 0816  
Fax: +1 425 673 7647

**Singapore** Tel.: +65 6845 1800  
Fax: +65 6214 0275

**Australia** Tel.: +61 03 9877 7170  
Fax: +61 03 9877 7870

**Japan** Tel.: +81 3 5281 1180  
Fax: +81 3 5281 1181

©2011 Red Chip Company Ltd. Technical specifications and appearance subject to change without notice. The information contained herein is correct at the time of printing. All trademarks are the property of their respective owners. BEHRINGER accepts no liability for any loss which may be suffered by any person who relies either wholly or in part upon any description, photograph or statement contained herein. 985-10000-00393

behringer.com

